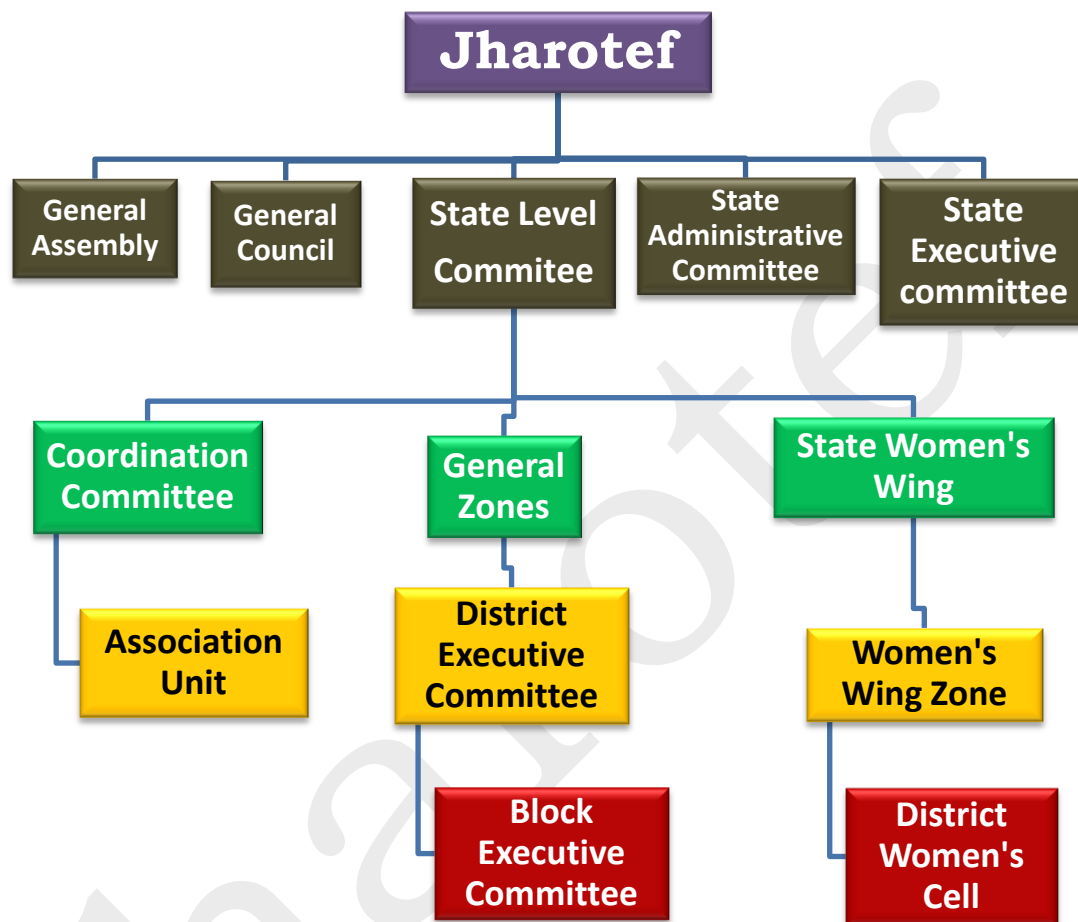


matter of urgent or serious concern.

10. Federation's Structure:-

(I) Organization Tree:-



**(II) Coordination Channel:-**

<div>Chief Patron</div> <div>State President</div> <div>Patrons</div>	General Secretary	Joint General Secretary	Deputy General Secretary
	State Treasurer	District Treasurers	
	Chief Organizing Secretary	Whips	District Executive Committee
		Organizing Secretaries	
	Chief Coordinator	Coordinators	
	State Convener		
	Senior Vice President	Vice President	
	Chief Advisor	Advisors (State, Finance and Legal)	
	State Women’s Wing President	State Women’s Wing Secretary	State Women Wing’s Vice President
	State Auditor		
	State Chief Spokesperson	State Spokesperson	District Spokesperson
	State Chief Media In-charge	State Media In-charge (Print and Electronic)	District Media In-charge
	State Chief Social Media In-charge	State Social Media In-charge (FB/IG, YT and Tweeter)	District Social Media In-charge
	State Cultural Cell In-charge		
	State Office Secretary		
	Editor in Chief		



11.	General Assembly (Aam Sabha) :-	<p>The General Assembly of the <i>federation</i> shall consist of all the registered members under section 3(I) and (II).</p> <p>The General Assembly shall be called to discuss and decide major resolutions[like Strike, Mass casual leave or other hard measures].</p> <p>The Quorum of the General Assembly will be 500 or at least 30 members each from at least 12 districts[excluding the DEC members], whichever is less. It shall be presided by the State President of the <i>federation</i> or a person delegated by him.</p>
12.	General Council (Samanya Parishad):-	<p>The General Council of the <i>Federation</i> shall consist of <i>all the Office bearers</i> of the State Executive Committee, the District Executive Committees, the State Women's Wing and the Association representatives.</p> <p>The General Council will discuss and resolve about the forthcoming movements/programs of the Federation, proposed by a State Executive Committee member [It will need an approval of the State President of the Federation].</p> <p>The Quorum for The General Council Meeting will be 100 or at least 3 district executive committee members each from at least 12 districts [At least 10 members from the State Level Committee including either two of the President, the General Secretary and the State Treasurer must be present in the General Council meeting].</p>

		It shall be presided by the State President of the <i>federation</i> or a person delegated by him.																																																			
13.	State Executive Committee : SEC (Prantiya Kayakarini Samiti):-	<p>The State Executive Committee shall have the below configuration :-</p> <table border="1"> <thead> <tr> <th>Sr. No.</th><th>Portfolio</th><th>No.s</th></tr> </thead> <tbody> <tr> <td>1.</td><td>Chief Patron (Mukhya Sanrakshak)</td><td>1</td></tr> <tr> <td>2.</td><td>President (Adhyaksha)</td><td>1</td></tr> <tr> <td>3.</td><td>General Secretary (Mahasachiva)</td><td>1</td></tr> <tr> <td>4.</td><td>State Treasurer (Prantiya Koshadhyaksha)</td><td>1</td></tr> <tr> <td>5.</td><td>Chief Organizing Secretary (Mukhya Sangathan Sachiv)</td><td>1</td></tr> <tr> <td>6.</td><td>Chief Coordinator (Mukhya Samanwayak)</td><td>1</td></tr> <tr> <td>7.</td><td>State Convener (Prantiya Sanyojak)</td><td>1</td></tr> <tr> <td>8.</td><td>Senior Vice President (Warishtha Upadhyaksha)</td><td>2</td></tr> <tr> <td>9.</td><td>Joint General Secretary (Sanyukta Mahasachiva)</td><td>2</td></tr> <tr> <td>10.</td><td>Chief Advisor (Mukhya Salahkaar)</td><td>1</td></tr> <tr> <td>11.</td><td>Patrons (Sanrakshak)</td><td>4</td></tr> <tr> <td>12.</td><td>Vice President (Upadhyaksha)</td><td>10</td></tr> <tr> <td>13.</td><td>Deputy General Secretary (Up-Mahasachiva)</td><td>10</td></tr> <tr> <td>14.</td><td>Women Wing President (Mahila Prakoshtha Adhyaksha)</td><td>1</td></tr> <tr> <td>15.</td><td>Organizing Secretary (Sangathan Sachiva)</td><td>8</td></tr> <tr> <td>16.</td><td>State Chief Spokesperson</td><td>1</td></tr> </tbody> </table>	Sr. No.	Portfolio	No.s	1.	Chief Patron (Mukhya Sanrakshak)	1	2.	President (Adhyaksha)	1	3.	General Secretary (Mahasachiva)	1	4.	State Treasurer (Prantiya Koshadhyaksha)	1	5.	Chief Organizing Secretary (Mukhya Sangathan Sachiv)	1	6.	Chief Coordinator (Mukhya Samanwayak)	1	7.	State Convener (Prantiya Sanyojak)	1	8.	Senior Vice President (Warishtha Upadhyaksha)	2	9.	Joint General Secretary (Sanyukta Mahasachiva)	2	10.	Chief Advisor (Mukhya Salahkaar)	1	11.	Patrons (Sanrakshak)	4	12.	Vice President (Upadhyaksha)	10	13.	Deputy General Secretary (Up-Mahasachiva)	10	14.	Women Wing President (Mahila Prakoshtha Adhyaksha)	1	15.	Organizing Secretary (Sangathan Sachiva)	8	16.	State Chief Spokesperson	1
Sr. No.	Portfolio	No.s																																																			
1.	Chief Patron (Mukhya Sanrakshak)	1																																																			
2.	President (Adhyaksha)	1																																																			
3.	General Secretary (Mahasachiva)	1																																																			
4.	State Treasurer (Prantiya Koshadhyaksha)	1																																																			
5.	Chief Organizing Secretary (Mukhya Sangathan Sachiv)	1																																																			
6.	Chief Coordinator (Mukhya Samanwayak)	1																																																			
7.	State Convener (Prantiya Sanyojak)	1																																																			
8.	Senior Vice President (Warishtha Upadhyaksha)	2																																																			
9.	Joint General Secretary (Sanyukta Mahasachiva)	2																																																			
10.	Chief Advisor (Mukhya Salahkaar)	1																																																			
11.	Patrons (Sanrakshak)	4																																																			
12.	Vice President (Upadhyaksha)	10																																																			
13.	Deputy General Secretary (Up-Mahasachiva)	10																																																			
14.	Women Wing President (Mahila Prakoshtha Adhyaksha)	1																																																			
15.	Organizing Secretary (Sangathan Sachiva)	8																																																			
16.	State Chief Spokesperson	1																																																			



			(Prantiya Mukhya Prawakta)	
		17.	State Advisor (Prantiya Salahkar)	2
		18.	Financial Advisor (Vittiya Salahkaar)	2
		19.	Legal Advisor (Vidhik Salahkaar)	2
		20.	Women wing Secretary (Mahila Praksoththa Sachiva)	1
		21.	Women wing Vice President (Mahila Prakoshtha Updhyaksha)	8
		22.	Spokesperson (Prawakta)	2
		23.	State Chief Media In-charge (Prantiya Mukhya Media Prabhari)	1
		24.	State Media In-charge (Prantiya Media Prabhari) Electronic and Print	2
		25.	State Chief Social Media In-charge (Prantiya Mukhya Social Media Prabhari)	1
		26.	State Social Media In-charge (Prantiya Social Media Prabhari) Facebook/Instagram, YouTube and Twitter	3
		27.	State Office Secretary (Prantiya Karyalaya Sachiva)	1
		28.	Auditor (Ankekshak)	1
		29.	Coordinator (Samanwayak)	8
		30.	Whip (Sachetak)	4
		31.	Cultural Cell In-charge (Saanskritik Prakoshtha Prabhari)	1
		32.	Editor in Chief (Sampadak)	1
		33.	District President(Jiladhyaksha)	24
		34.	District Secretary(Jila Sachiva)	24



		<table><tr><td>35.</td><td>District Treasurer (Jila Koshadhyaksha)</td><td>24</td></tr><tr><td>36.</td><td>District Women Cell President (Jila Mahila Prakoshtha Adhyaksha)</td><td>24</td></tr></table> <p>This Committee will discuss and finalize the format of a movement/program being organized by the Federation.</p> <p>The Quorum for the meeting of the State Executive Committee will be 1/3rd of the total active members of the SEC including at least either two of the State President, the State General Secretary and the State Treasurer.</p> <p>It shall be presided by the State President of the Federation or a person delegated by him.</p>	35.	District Treasurer (Jila Koshadhyaksha)	24	36.	District Women Cell President (Jila Mahila Prakoshtha Adhyaksha)	24
35.	District Treasurer (Jila Koshadhyaksha)	24						
36.	District Women Cell President (Jila Mahila Prakoshtha Adhyaksha)	24						
14.	State Level Committee : SLC (Prantiya Samiti) :-	<p>The State Level Committee (SLC) shall consist of the Chief Patron, the President, the General Secretary, the State Treasurer, the Chief Organizing Secretary, the State Convener, the Senior Vice Presidents, the Joint General Secretaries, the Chief Coordinator, the Chief Advisor, the Vice Presidents, the Deputy General Secretaries, the Organizing Secretaries, the State Office Secretary, the State Chief Media In-charge, the State Media In-charge, the State Chief Social media in-charge, the Social media in-charge, the State Chief Spokesperson, the Spokespersons, the Auditor, the Women Wing President, the Women's</p>						



		<p>Wing Secretary, the Women's Wing Vice Presidents, the State Office Secretary, the Editor-in-Chief, the Cultural Cell In-charge and the Presidents and General Secretaries of the Employees' Associations affiliated with the federation. [The Presidents and the General Secretaries of the affiliated Associations will function as Executive members and they will have opinion rights only]</p> <p>The SLC will discuss and take decisions accordingly about the issues of urgency or of other vital concern, with the permission of the President.</p> <p>The Quorum for the meeting of the SLC will be 1/3rd of the SLC including at least either two of the State President, the State General Secretary and the State Treasurer.</p> <p>It shall be presided by the State President of the <i>federation</i> or a person delegated by him.</p>
15.	State Administrative Committee (SAC) : Prantiya Prashasanik Samiti	<p>The State Administrative Committee (SAC) shall consist of the President, the General Secretary, the State Treasurer, the Senior Vice Presidents, the Joint General Secretaries, the Chief Coordinator, the Chief Organizing Secretary, the State Convener, the Chief Advisor, the State Chief Media In-charge, the State Chief Social media in-charge, the State Chief Spokesperson, the Auditor, the Women Wing President and the Women Wing Secretary of the SLC.</p>



		<p>An office bearer of the SEC could temporarily be invited by the state president to participate in the SAC meeting, only if it is necessary for the subject.</p> <p>It will do assessment, analysis of an emergent issue or an issue of urgent concern and will take an interim decision subject to have an approval of the SLC.</p> <p>In a highly urgent situation the interim decision could be deemed as final decision of the SLC, which will be subject to approval of the SLC within two months of execution of the decision.</p> <p>Its meeting could be called whenever required as per the above situation. The outcomes of the meetings will only be discussed in the SLC.</p>
16.	Honorary Emeritus Members	<p>Those persons who are the <i>founder members</i> of NMOPS, Jharkhand will be the <i>Honorary Emeritus Members</i> of the SLC of the <i>federation</i> for their lifetime. The name of these members are hereunder as : -</p> <p>Shri Vikrant Kumar Singh, Shri Pradip Kumar Mandal, Shri Nitin Kumar, Shri Ravindra Kumar Chaudhary, Shri Ujjwal Kumar Tiwari, Shri Sudhanshu Kumar Singh, Shri Sunil Kumar, Shri Lokesh Kumar, Shri Arvind Kumar, Shri Anand Kishore Sahu, Shri Lal BihariYadav, Shri Pankaj Kumar Singh and Shri Mukesh Chandra Paswan.</p> <p>The SLC membership of above persons</p>



		<p>could last only when they resign or they are prosecuted in a criminal offence for imprisonment of minimum two years or equivalent.</p> <p>Their membership could be suspended for one year by the SLC (reported through the GRU) whenever they are found to be indulged in malpractices and activities against the objective and spirit of the <i>federation</i>.</p> <p>If somehow they do not manage to be an office bearer of the SLC or they get retired from their service, they would hold the position of Executive Member of the State Level Committee (SLC). Provided that they will not have the voting rights in the SLC if they get retired from their service.</p>
17.	District Executive Committee (DEC) : Jila Karyakarini Samiti :-	<p>The District Executive Committee (DEC) shall consist of the District President, the District Patron, the District Secretary, the District Treasurer, five District Vice Presidents, five District Joint Secretaries, the District Women's Cell President, the District Women's Cell Secretary, the District media In-charge, the District Social Media In-charge, the District Spokesperson and the Executive Members (Block Presidents) [if the DEC is nominated by the SLC, its members should be from at least four different departments/Associations. In that case the District President, the District Secretary and the District Treasurer must be from three different departments/Associations. The Block</p>



		<p>Presidents will be the Executive members of the DEC].</p> <p>This Committee will have the following functions :-</p> <p>(I) Adding members to the Federation as mentioned in section 3.</p> <p>(II) Maintaining the Registers as mentioned in section 5.</p> <p>(III) Giving directions to the Block Executive Committees, as received from the Competent Authority of the State Level Committee (SLC).</p> <p>(IV) Doing Movements/Programs as directed or Approved by the Competent Authority of the State Level Committee (SLC).</p> <p>(V) The District Executive Committees will function in accordance and guidance of the respective Organizing Secretary who may have an assistance of the respective Coordinator and the respective Whip.</p>
18.	Block Executive Committee (BEC) : Prakhanda Karyakarini Samiti :-	<p>It shall function as the elementary unit of the Federation.</p> <p>The Block Executive Committee shall consist of the Block President, the Block Secretary, the Block Treasurer, two Block Vice Presidents and two Block Joint Secretaries and Block Executive Members [the Panchayat Representatives will function as the Block Executive Members. The BEC members will compulsorily be at least from two different departments/association and there shall be at least one female office bearer].</p> <p>The Block Executive Committee shall have the</p>



		<p>following functions :-</p> <p>(I) Adding members to the Federation as mentioned in section 3.</p> <p>(II) Maintaining Registers as mentioned in section 5.</p> <p>(III) Following the directions received from the District Level Committee [as received from the Competent Authority of the State Level Committee].</p> <p>(IV) Doing Movements/Programs directed or approved by the Competent Authority of the State Level Committee.</p>
19.	Coordination Committee (Samanvaya Samiti) :-	<p>It shall consist of the Chief-Coordinator, the Coordinators and the Association Representatives.</p> <p>It will be headed by the Chief Coordinator.</p> <p>It will look into coordinate the functions and affairs of the <i>federation</i> with various Employees' Associations, departments, PSUs and other state Government bodies.</p> <p>It will function as a Second line hierarchy.</p>
20.	State Women's Wing : SWW (Prantiya Mahila Prakoshtha)	<p>It Shall consist of the Women's wing President, its Secretary, its Zonal Vice-Presidents, the District Women President and the District Women's Secretaries.</p> <p>It will look into execution of the directions given by the SLC to ensure female participation to the <i>federation</i>. It will ensure higher participation of the female participants in a program organized by the</p>



		SLC/SEC. It will monitor the District Women's Cell.
21.	District Women's Cell : DWC (Jila Mahila Prakoshtha)	<p>The District Women Cell will be Consisted of the District Women Cell President, the District Women Cell Secretary and ten Executive members *[The committee members will be at least from three departments / Association].</p> <p>It will look into the female participation in the <i>federation</i>. Any Female joining any part of the <i>federation</i> will be an automatic member of the relevant district women cell. For doing this the District Women's Cell Secretary will time to time consult the concerning DEC to avail the list of females joining the <i>federation</i> and will update in their members list.</p> <p>Apart from above, it will function to add more female members to the <i>federation</i> and to coordinate with the relevant authority whenever asked for organizational purpose.</p>
22.	Elections:-	<p>(I) There shall be elections for office bearers of the State Level Committee (Prantiya Samiti : SLC who are also part of the SEC), in every three years.</p> <p>a. Sr. no. 2, 3, 4, 5, 6 (for only one post), 7 (for only one post)9, 10, 11 (for only eight posts), 12 (for only eight posts) and 14of the SECwill be elected by the elected members of the DEC's and the delegates.</p> <p>b. The remaining members of the SLC will be nominated by the then newly elected members of the SLC, <u>in consultation with the relevant wing head or the organizing secretary or the DEC in case.</u></p> <p>c. <u>Sr. no. 14, 20 and 21</u> will be elected only by the members of <u>District Women's Cells.</u></p>